

ECLIPSE DEMO SITES



ENERGY CONSUMPTION REDUCTION BASED ON OPEN-SOURCE REFERENCE FRAMEWORK

23 PARTNERS

9.8 M€ BUDGET

13 EU COUNTRIES

17 PILOT LOCATIONS

DIGITAL EUROPE PROGRAMME



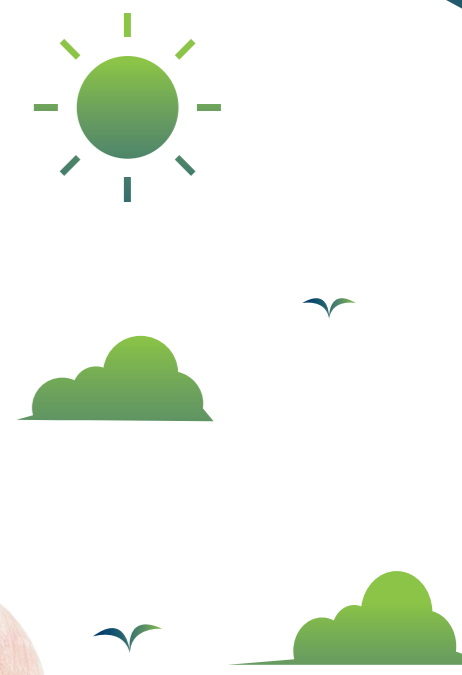
PROJECT COORDINATOR **etra** I+D PARTNERS



Funded by the European Union. Views and opinions expressed are however those of the author(s) only and do not necessarily reflect those of the European Union. Neither the European Union nor the granting authority can be held responsible for them. DIGITAL EUROPE Grant agreement N° 101158494.

COMMUNICATION CHANNELS

- www.eclipse-digital.eu
- info@eclipse-digital.eu
- [@eclipseproject](https://www.linkedin.com/company/eclipseproject)
- [@EclipseEUProject](https://www.youtube.com/channel/UC...)
- [@Eclipse_Europe](https://twitter.com/Eclipse_Europe)



HOW

ECLIPSE project implements and demonstrates a Common European Reference Framework (CERF) for energy consumers' applications to promote sustainable energy consumption behaviour, while strengthening the stability and resilience of European electricity networks.

ECLIPSE lays the foundations and standards for the development of new and improved energy monitoring applications that provide consumers with simple, useful and easy-to-use information. It will integrate features such as eco-tips, blackout prevention strategies, cost-saving measures, and incentives for load shifting to promote sustainable energy use.

WHEN

24 months starting September 2024

WHO

A consortium of 23 partners including DSOs, TSOs, energy services companies, R&D entities, universities, European and national associations.

WHERE

In 16 EU countries around all Europe

GOALS

01 Develop a standard and open-source reference framework for energy consumer applications.

02 Enable voluntary energy consumption reductions based on recommendations and incentives.

03 Stimulate demand response to reinforce the flexibility, stability and resilience of the European electricity grids.

04 Promote the widespread adoption of the Common European Reference Framework (CERF) throughout the EU.

